

BS25

H-bridge Driver Motor



Product	
Weight	300gr

Operation Mode	
Speed Controller (Closed Loop)	Yes
Manual Controller (Open Loop)	Yes

Electrical Data	
Operating Voltage VCC (min.)	11.5V
Operating Voltage VCC (max.)	32V
Max. output voltage (factor*VCC)	0.97
Max. Output Current I_{max}	70A
Max. Time of Peak Output Current I_{max}	1s
Continuous output current I_{cont}	25A
PWM clock Frequency of Power Stage	20KHZ
Sampling rate PI speed controller	100HZ

Interface	
Ethernet – UDP	100Mb/s
Can	Yes

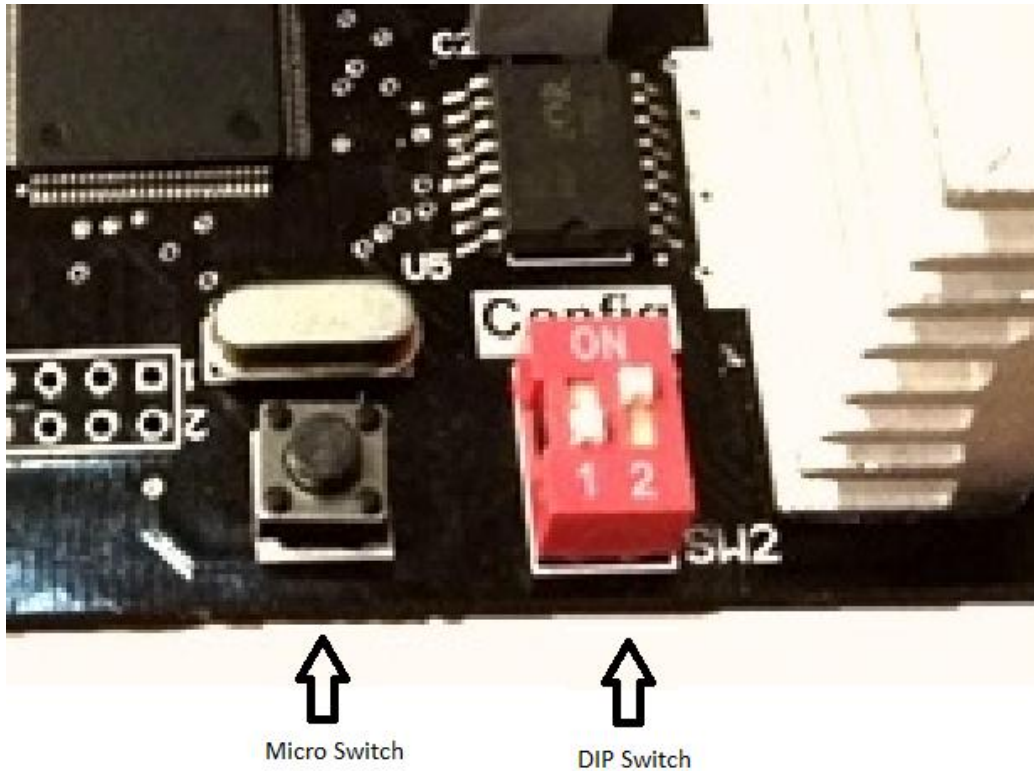
Software	
Installation Program	Yes
Operation System	Windows 8 , Windows 7 , Windows Vista , Windows xp

Input	
Encoder Signal	A , B , I
Encoder Plus	100 - 500

Protective Functions	
Protective functions	Current Limit – Short circuit in the motor

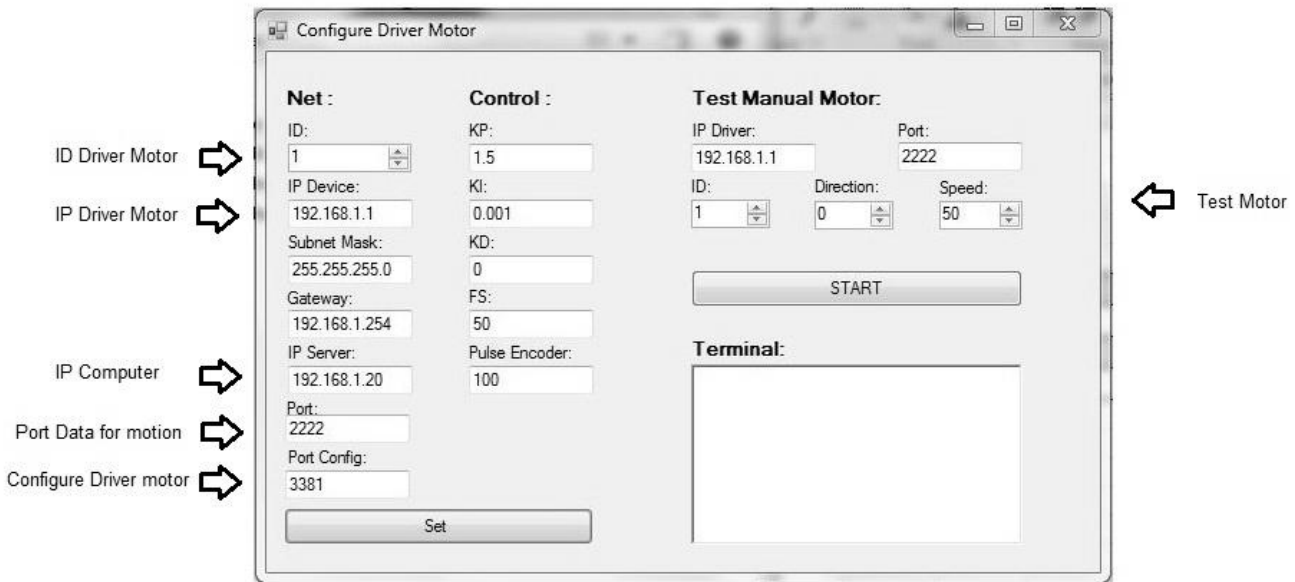
Mode Switches

They have 1 DIP switch and 1 micro switch in the operating mode of the BS25. You cannot change switch modes when the module is on.



Mode	Switch1	Switch2	Micro Switch
Manual CW	off	off	On/off motor
PI Controller Disable	on	off	x
PI Controller Enable	off	on	x
Manual CCW	on	on	On/off motor
Reset Factory	On	On	First - Plug-off and plug-on Second - push for 5s

Software Configuration:



Driver Motor Connection:

