

Laser distance sensor



深圳瑞兴嘉电子
<http://rxjdz.hqew.com>



深圳瑞兴嘉电子
<http://rxjdz.hqew.com>



product description

Self-developed USB-TTL / STC-ISP online programming using the USB interface for laptop users

No solve serial programming convenience STC Series MCU without problems, the present downloader low price, high performance, factory, school schools, individuals develop STC MCU of choice for outstanding tools.

Features:

- 1. Supports USB1.1 or USB2.0 communications;**
- 2. Full support WIN98, WINME, WIN2000, WINXP, VISTA, WIN7 and other operating systems;**
- 3. Use USB port power supply, the inner panel with a 500mA resettable fuse or insurance resistance to protect the computer motherboard is not intended to be burnt outside;**
- 4. When the chip can be programmed using the target system power supply itself, you can also use the programmer to take power supplied from the USB port target board, but should ensure Objectives current less than 500mA, so as not to not properly programmed;**
- 5. The programming is complete does not affect the target program is running;**
- 6. Support STC full range of chip programming;**
- 7. Programming provides 3.3V and 5V voltage output interface;**
- 8. faster and more stable than the parallel programming easier for laptop users;**
- 9. adopts imported chip, capable of high-speed stability program;**

Power Range:

VCC: 3 ~ 3.3VDC Current: 100mA

Technical Parameters

Measuring range	0.05 ~ 30m
Measurement accuracy (standard deviation)	1.0mm
Angle measurement	-
Distance units	m
Laser Type	620 ~ 690nm
Laser Level	II grade, <1mW
Spot diameter at a distance m	6mm @ 10m , 50m @ 30mm
Single measurement time	1s

Protection class	IP40
Operating temperature	-10 ~ + 60 °C
Storage temperature	-20 ~ + 80 °C
weight	About 60g
Dimensions (length × width × height)	48 × 42 × 18mm
Implementation of standards	GB / T 14267-2009

Laser measurement **from mold** block **through** the communication protocol:

Baud rate 9600bps, 8 data bits, 1 start bit, one stop bit, no parity.

Functional Description	Command code	Return Codes	Remark
Read parameter	FA 06 01 FF	FA 06 81 ADDR xx xx xx CS	Read constant, address, back to the amount

			of light, temperature
Read machine No.	FA 06 04 FC	06 84 the FA "DAT1 DAT2 DAT16" the CS	DATn ASCII format
Set Address	FA 04 01 ADDR CS	FA 04 81 81	Successful operation
		FA 84 81 02 FF	Write address error is returned
Modify distance	FA 04 06 sign (positive or negative, negative as 0x2d, positive as 0x2b), 0xXX (correction value, a byte), CS	FA 04 8B 77	Successful operation
		FA 84 8B 01 F6	operation failed
Continuous measurement data set return time interval	FA 04 05 MeaInterver CS	FA 04 85 7D	Successful operation
		FA 84 85 01 FC	Write time interval error
		FA 84 85 01 FA	operation failed

Set the distance starting and ending points	FA 04 08 Position CS	FA 04 88 7A	Successful operation
		FA 84 88 01 F9	operation failed
	Note: before starting to back-end selection		

ADDR The default value is 80 (128)

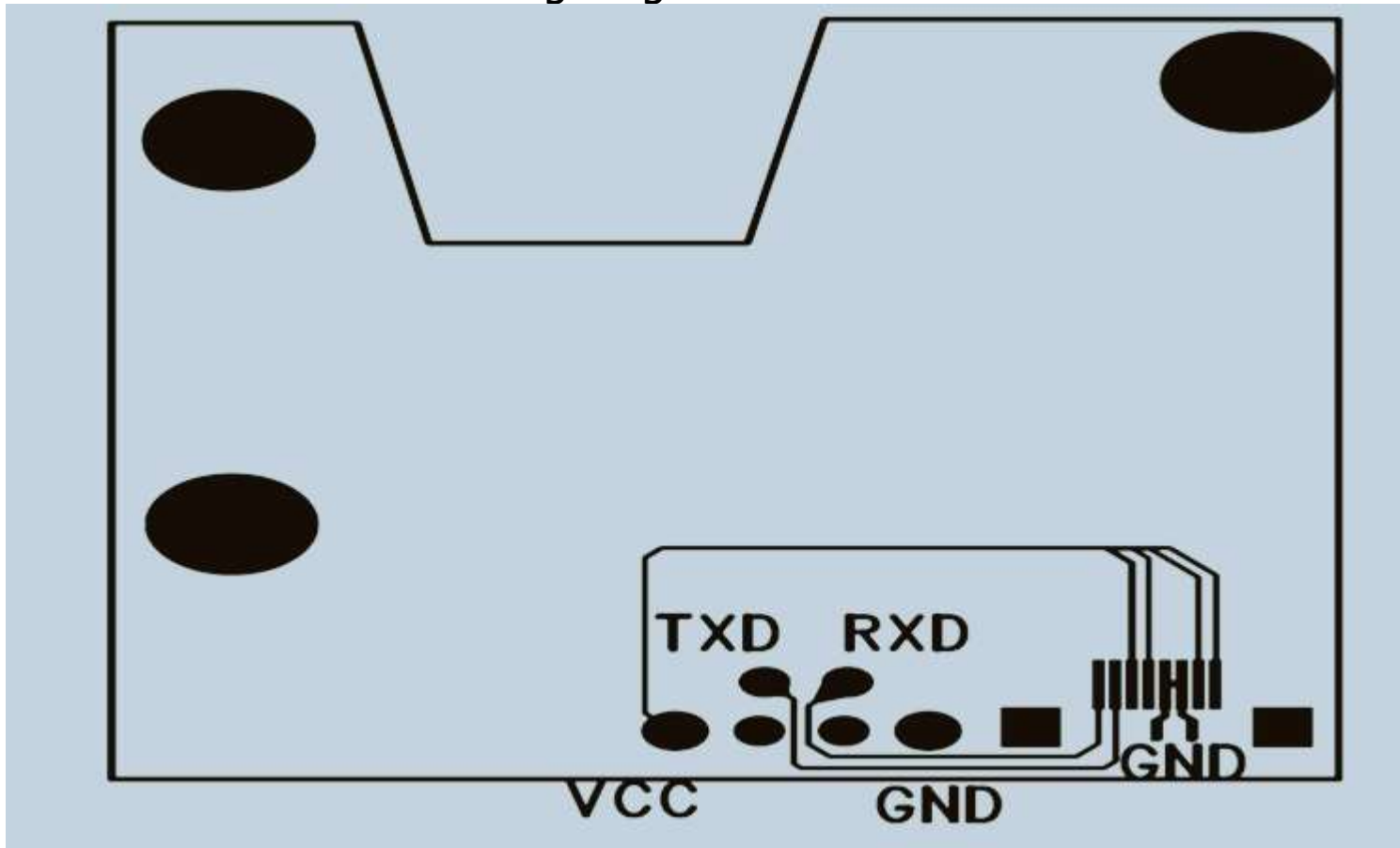
Parameters to factory settings, the data read command:

Single measurement: 80060278

Continuous measurement: 80060377

Shutdown: 80 04 02 7A

Laser distance sensor wiring diagram:



00 |

打开文件 | 文件名 | 发送文件 | 停止 | 保存窗口 | 清除窗口 | 帮助 | 一 | 扩展

串口号	COM3	<input type="checkbox"/> 关闭串口	<input checked="" type="checkbox"/> HEX显示	嘉立创PCB大降价,小万Q:800058315
波特率	9600	<input type="checkbox"/> DTR <input type="checkbox"/> RTS	<input checked="" type="checkbox"/> HEX发送	欢迎访问大虾论坛!众多大虾等着你!
数据位	8	<input type="checkbox"/> 发送新行		-----以下为广告-----
停止位	1	<input type="checkbox"/> 定时发送	1000 ms/次	市场化与创新典范,国产51单片机
校验位	None	字符串输入框:	<input type="button" value="发送"/>	PCB打样点这甲 http://www.sz-ilc.com/
流控	None	80 06 03 77		

www.daxia.com | S:0 | R:1 | COM3已打开 9600bps,8,1,无校验,无流控 | CTS=0 DSR=0 RLSD=0

00 80 06 83 30 30 30 2E 38 36 39 93 80 06 83 30 30 30 2E 38 36 39 93 80 06 83 30 30 30 2E 38 36 39 93
80 06 83 30 30 30 2E 38 36 39 93 80 06 83 30 30 30 2E 38 36 38 94 80 06 83 30 30 30 2E 38 36 38 94 80
06 83 30 30 30 2E 38 36 38 94 80 06 83 30 30 30 2E 38 36 38 94 80 06 83 30 30 30 2E 38 36 38 94 80 06
83 30 30 30 2E 38 36 38 94 80 06 83 30 30 30 2E 38 36 38 94 80 06 83 30 30 30 2E 38 36 39 93 80 06 83 30 30 30 2E 38 36 38 94 80 06 83
30 30 30 2E 38 36 38 94 80 06 83 30 30 30 2E 38 36 38 94 80 06 83 30 30 30 2E 38 36 38 94 80 06 83 30 30 30 2E 38 36 38 94 80 06 83 30
30 30 2E 38 36 38 94 80 06 83 30 30 30 2E 38 36 38 94 80 06 83 30 30 30 2E 38 36 38 94 80 06 83 30 30 30 2E 38 36 39 93 |

打开文件 | 文件名 | 发送文件 | 停止 | 保存窗口 | 清除窗口 | 帮助 | 一 | 扩展

串口号	COM3	打开串口	<input checked="" type="checkbox"/> HEX显示	嘉立创PCB大降价,小万Q:800058315
波特率	9600	<input type="checkbox"/> DTR <input type="checkbox"/> RTS	<input checked="" type="checkbox"/> HEX发送	欢迎访问大虾论坛!众多大虾等着你!
数据位	8	<input type="checkbox"/> 发送新行		-----以下为广告-----
停止位	1	<input type="checkbox"/> 定时发送	1000 ms/次	市场化与创新典范,国产51单片机
校验位	None	字符串输入框:	<input type="button" value="发送"/>	PCB打样点这甲 http://www.sz-ilc.com/
流控	None	80 06 03 77		