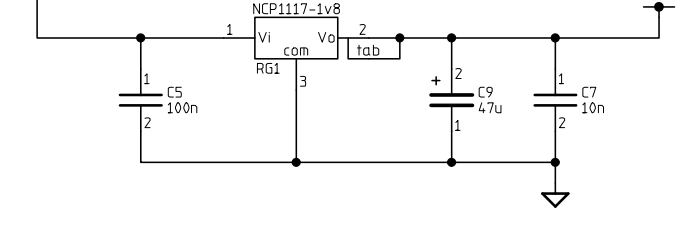
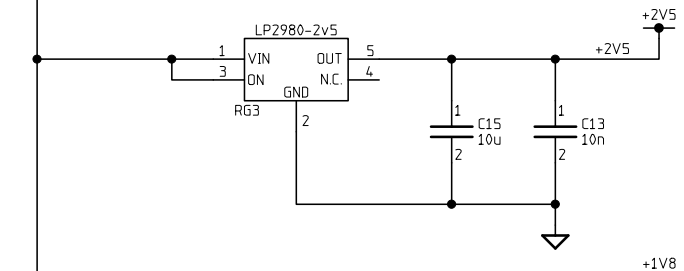
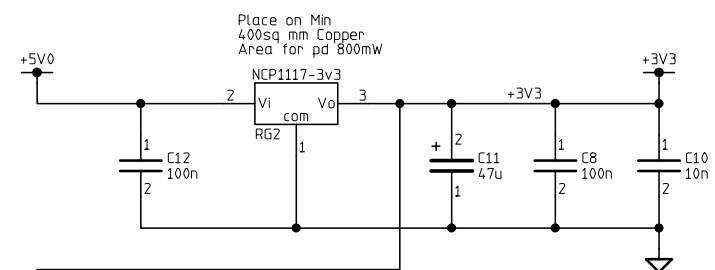
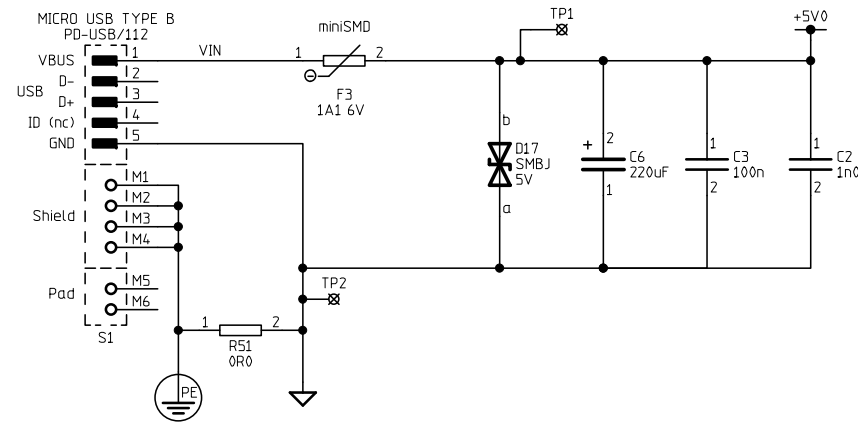
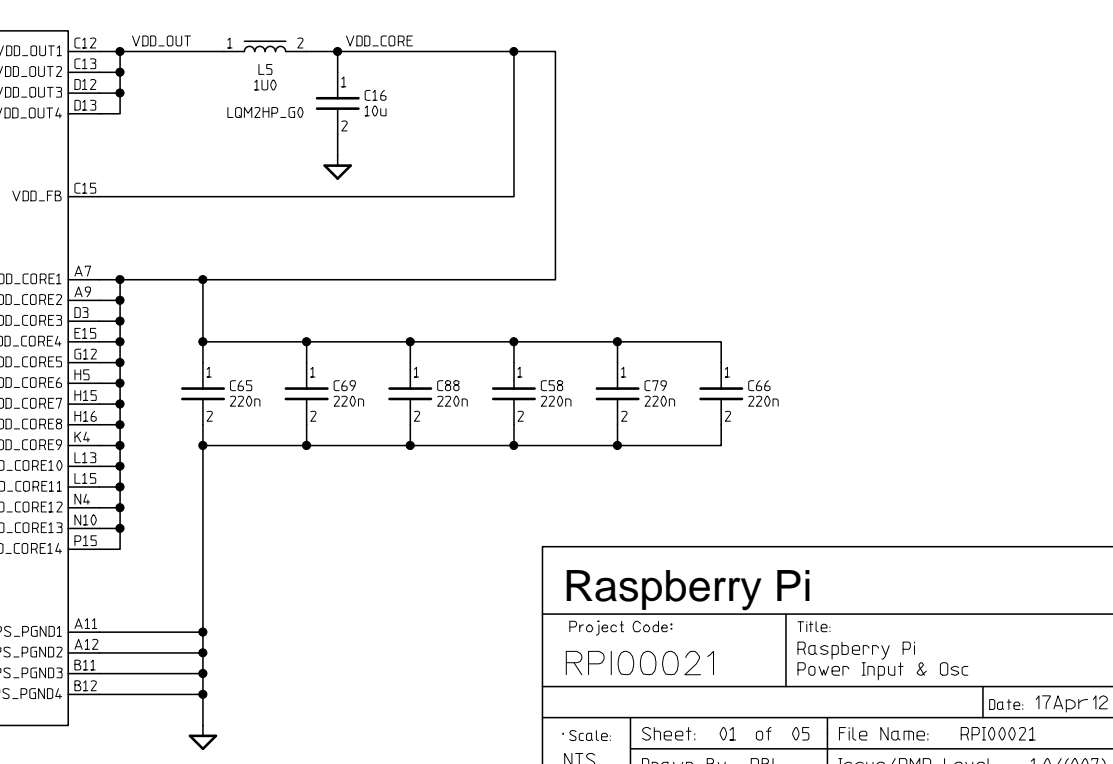
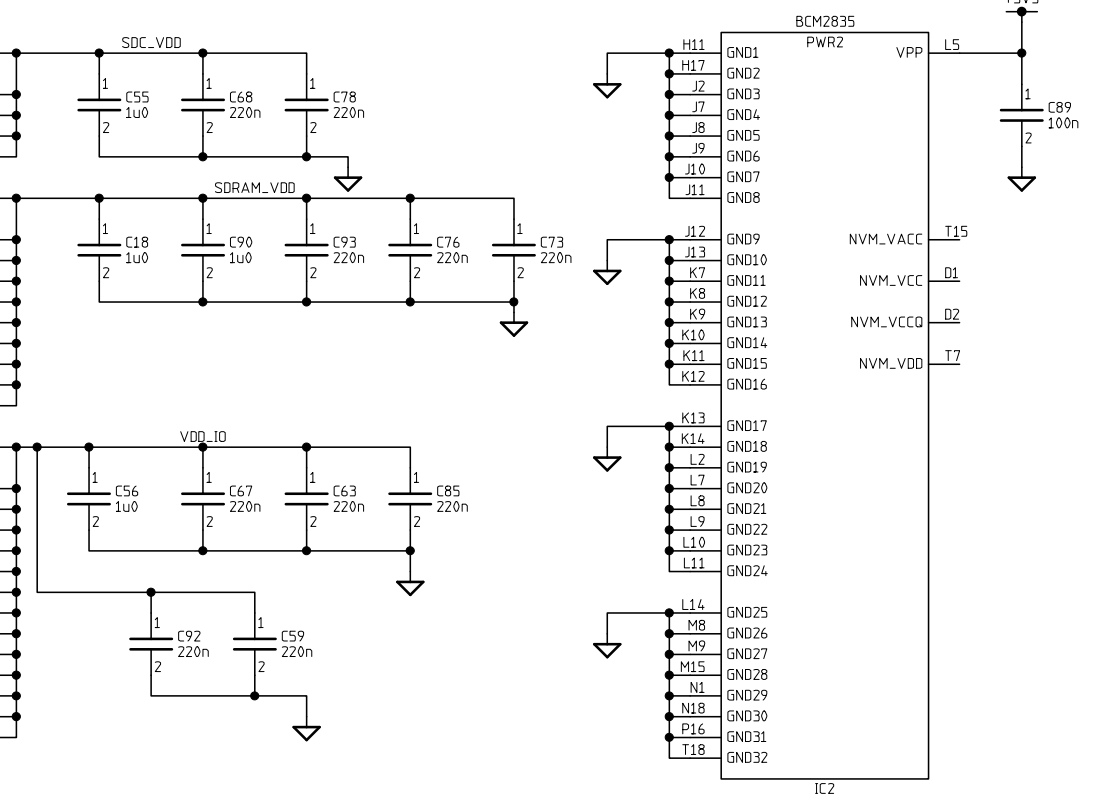
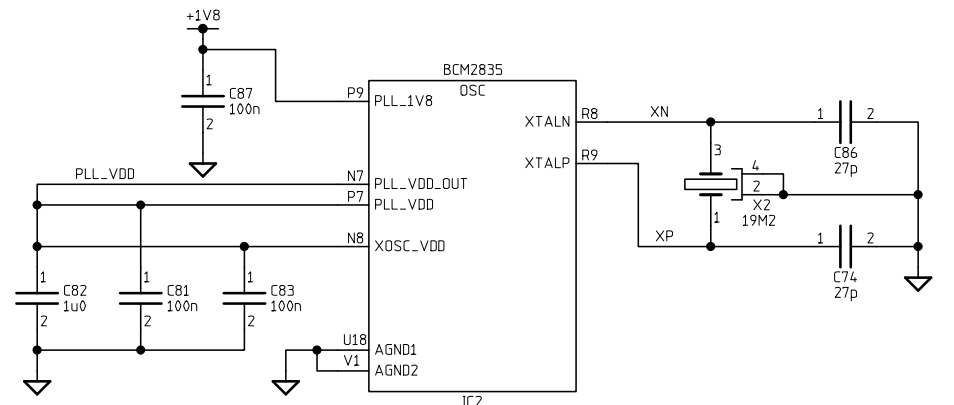
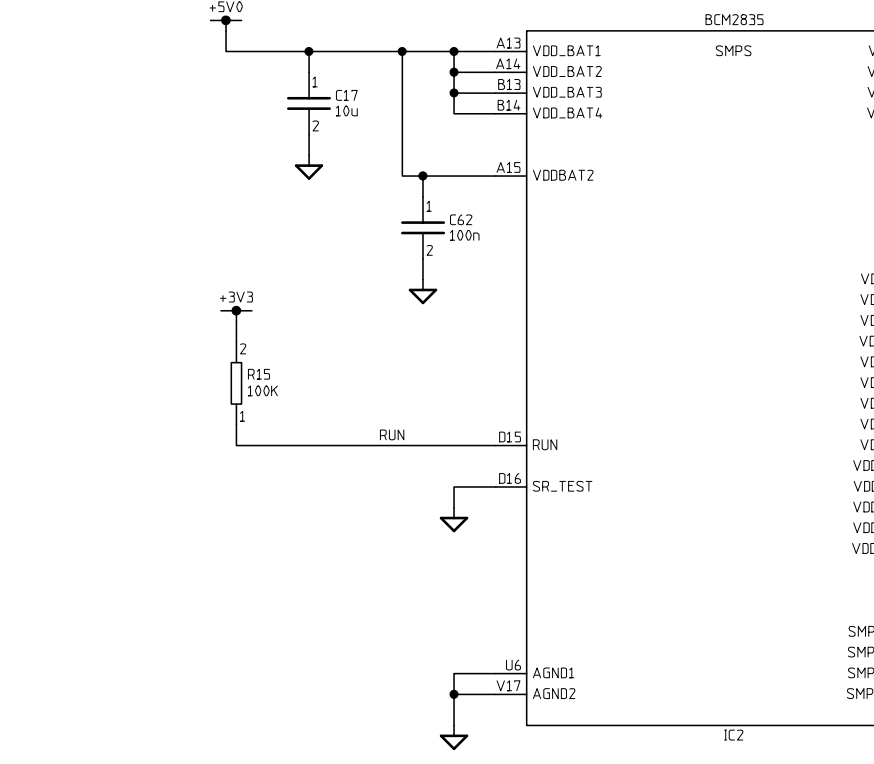
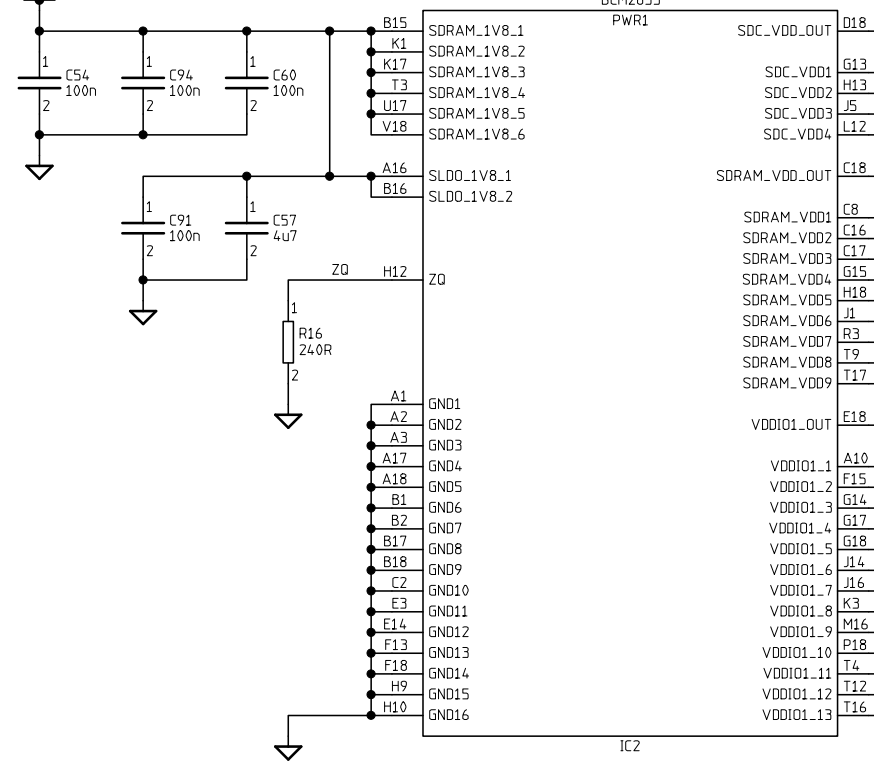


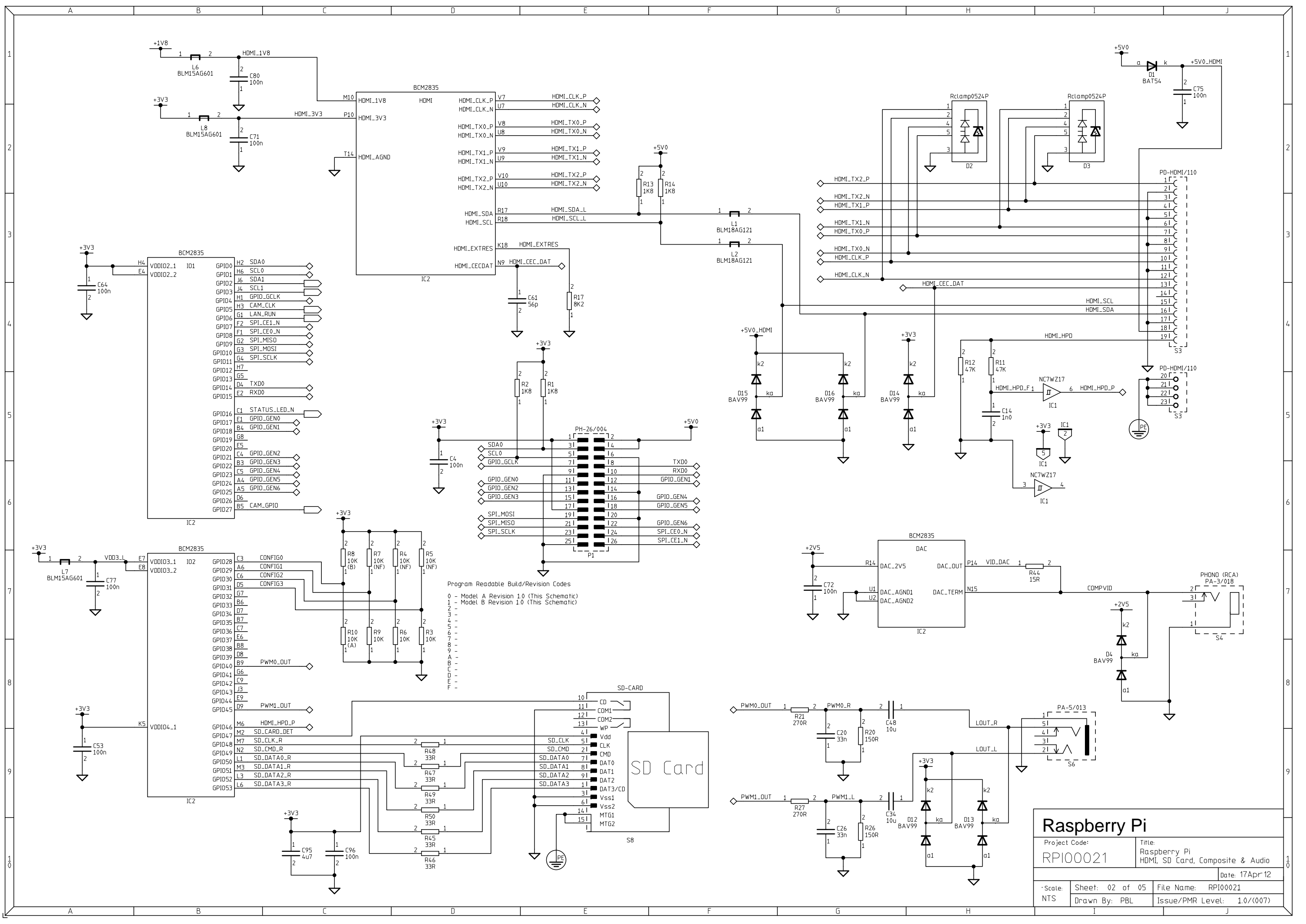
USB Power Input 5V 700mA min



Used to be called SDRAM\_1V8 on previous issues  
now connected to +1V8 on Layer 5

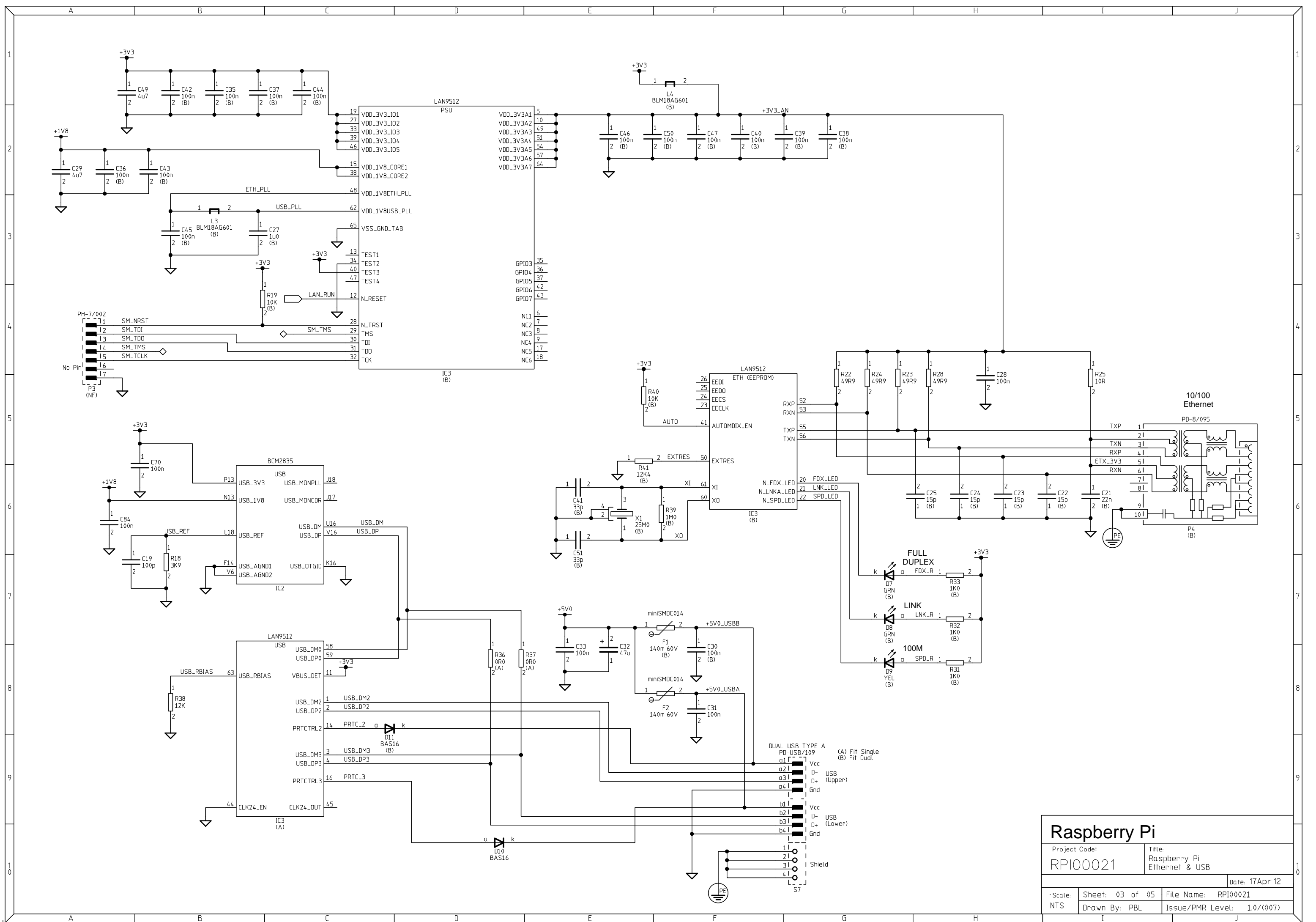


<b>Raspberry Pi</b>	
Project Code: RPI00021	Title: Raspberry Pi Power Input & Osc
Date: 17Apr 12	
Scale: NTS	Sheet: 01 of 05 File Name: RPI00021 Issue/PMR Level: 1.0/(007)

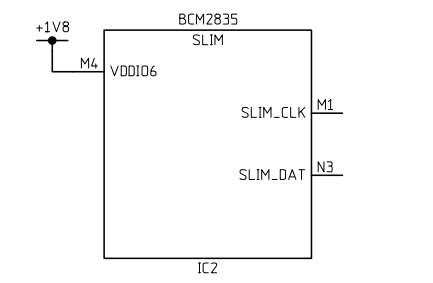
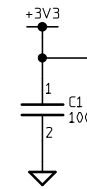
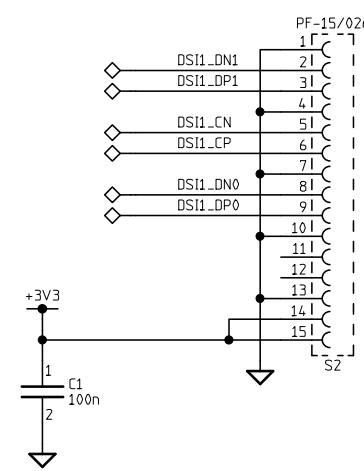
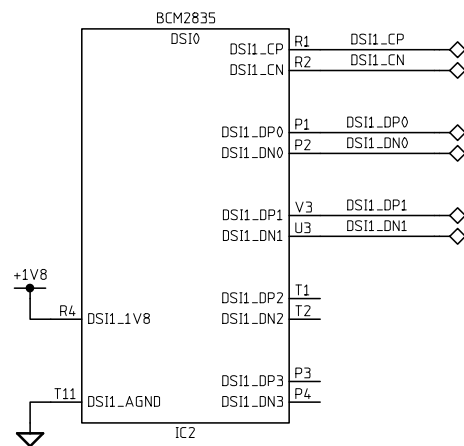
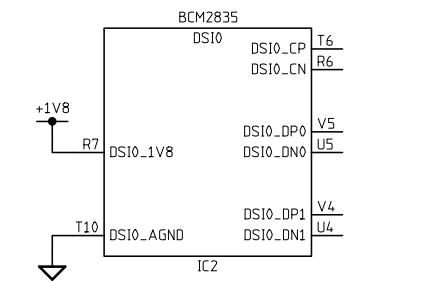
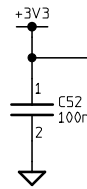
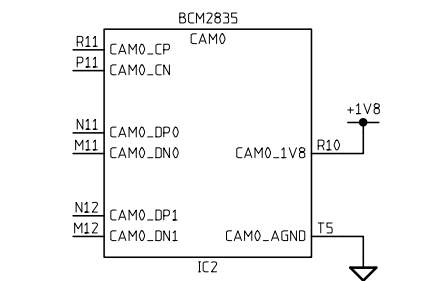
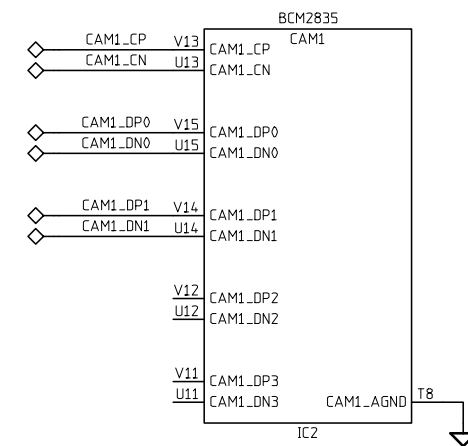
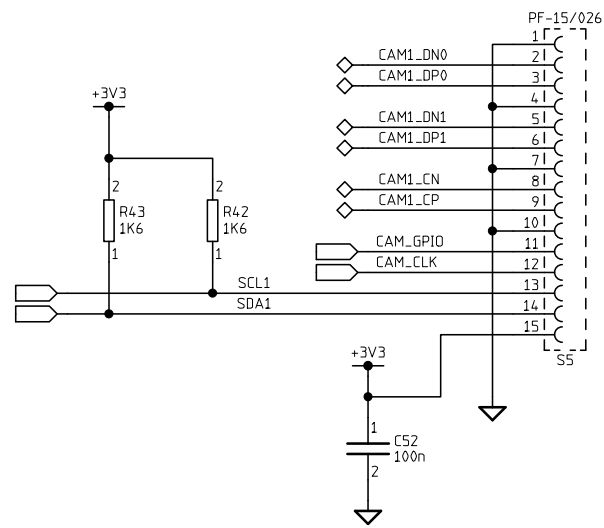
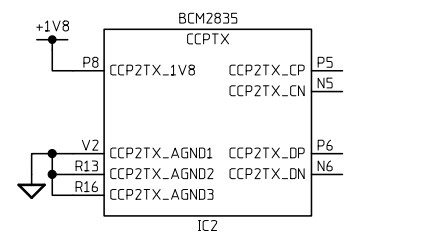
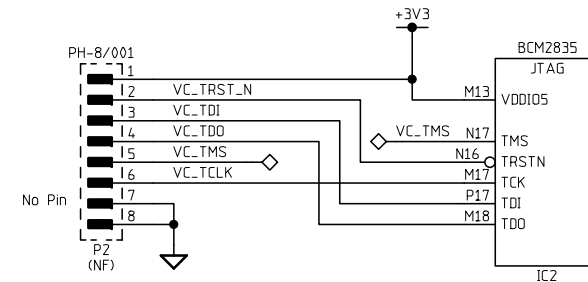
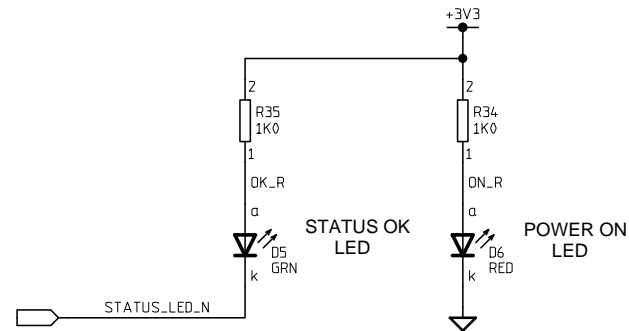
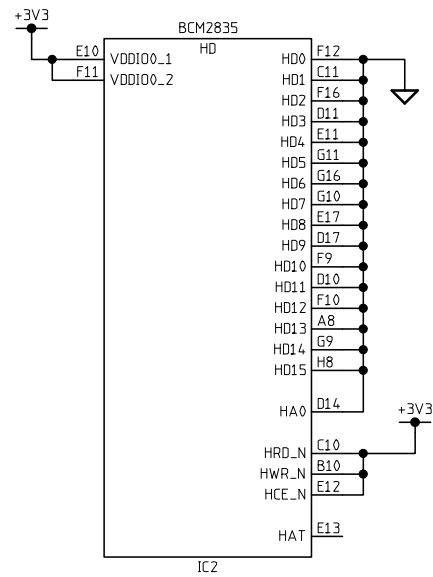


Program Readable Build/Revision Codes  
 0 - Model A Revision 1.0 (This Schematic)  
 1 - Model B Revision 1.0 (This Schematic)  
 2 -  
 3 -  
 4 -  
 5 -  
 6 -  
 7 -  
 8 -  
 9 -  
 A -  
 B -  
 C -  
 D -  
 E -  
 F -

<b>Raspberry Pi</b>	
Project Code: RPI00021	Title: Raspberry Pi HDMI, SD Card, Composite & Audio
Date: 17Apr 12	
Scale: NTS	Sheet: 02 of 05 File Name: RPI00021 Issue/PMR Level: 1.0/(007)



<b>Raspberry Pi</b>	
Project Code: RPI00021	Title: Raspberry Pi Ethernet & USB
Date: 17Apr 12	
Scale: NTS	Sheet: 03 of 05
File Name: RPI00021	Issue/PMR Level: 1.0/(007)



### PCB Build Variations

Each Build variant is assigned a letter A-Z. Components affected by a variant have that letter, in parentheses, associated with it on the schematic pages.

Build Variant	Build Description
A	Components only fitted to Model A (Basic)
B	Components only fitted to Model B (Full System)
(NF)	Components not fitted to either model.

Notes: A PCB assembly option ("Build Option") is formed by summing the required variants of circuit sections. Eg. A+D+G.

### PCB Assembly Options

List of Assembly options (valid combinations of Build variants, for reference only).

Build variants	Build Description
A	Components only fitted to Model A (Basic)
B	Components only fitted to Model B (Full System)

### PCB Parts List Entry

- Project Code	- Issue
BD-RPI-00021/001	

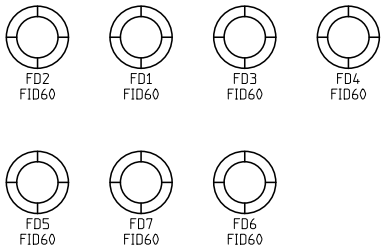
### PCB Layout Requirements

Layout notes referring to specific components or groups of components are indicated on the schematics by the note number, enclosed in braces, adjacent to the component. Eg {4}.

Note No.	Description

Design (c) 2011,2012 Raspberry Pi Foundation  
All Rights Reserved

Portions of this work copyright 1979-2012 Norcott Technologies Limited  
Provided to the Raspberry Pi Foundation under a perpetual,  
royalty free, use and modify licence.



[www.maxelectronic.ir](http://www.maxelectronic.ir)

[www.shop.aftabayaneh.com](http://www.shop.aftabayaneh.com)

<b>Raspberry Pi</b>	
Project Code: RPI00021	Title: Raspberry Pi Build Options/PCB layout instructions.
Client: @Client	Date: 17Apr 12
Scale: NTS	Sheet: 05 of 05 File Name: RPI00021 Issue/PMR Level: 1.0/(007)